

*Cnap & Win!*  
**iPad Pro**  
 Check out our contest!  
[suzuka.com.my/promotion](http://suzuka.com.my/promotion) | T&C Apply



# SUZUKA<sup>®</sup> TEXTURE COATING



EDITION  
 2.2

*Free*  
**Product  
 Training**

For All Industry  
 Professionals

[suzuka.com.my/career-training](http://suzuka.com.my/career-training)



## WALL FINISH PROFESSIONALS



**suzuka.com.my**

**suzuka.group** | Hotline : +6012-258 7388



Photos of the products shown in this catalogue may vary in color due to lighting condition & printing. **We suggest you examine actual product samples before ordering.**



TEXTURE COATING-E2.2-2503

**WALL FINISH  
 PROFESSIONALS.**

**SINCE  
 1977**

**MAGIC GRANITE,  
 STONY COAT &  
 CERAMIC COAT**

*FOR THE EXTERIOR & INTERIOR*

Conforms to **LEED,**  
**U.S. Green Building Council Standards**



# SUZUKA<sup>®</sup> TEXTURE COATING



## MAGIC GRANITE

- Rougher surface
- With mineral flakes, it brings minor reflective effects, to create extraordinary looks.

## STONY COAT

- Rough surface
- With natural stone, to create natural stone look effect.

## CERAMIC COAT

- Sandy surface
- Create fine and simple looks.



Conforms to LEED, U.S. Green Building Council Standards



## Application Process

Process	Product Code	Dilution	Packing	Number of Coats	Coating Interval	Consumption (±15%)	Coverage (per drum)	Application Tools
<b>1 Surface Preparation</b>	Surface shall be dry and free from dirt, oil, grease and other contaminants. All cracks or defective substrate shall be repaired with suitable cement filler.							
<b>2 Primer</b>	EMP	Max 5% clean water	1 L 18 L	1	3 hrs	7 – 9 m <sup>2</sup> /l	7 – 9 m <sup>2</sup> 126 – 162 m <sup>2</sup>	Roller or Brush
<b>3 Texture Coat</b>	MGM	-	25 kg	1 – 2	24 hrs	4.2 – 5.0 kg/m <sup>2</sup>	5 – 6 m <sup>2</sup>	Spray Gun (Nozzle 8 mm)
	NSC	-	25 kg	1 – 2	24 hrs	4.2 – 5.0 kg/m <sup>2</sup>	5 – 6 m <sup>2</sup>	Spray Gun (Nozzle 6.5 mm)
	TC	-	25 kg	1 – 2	24 hrs	3.0 – 3.6 kg/m <sup>2</sup>	7 – 8 m <sup>2</sup>	Spray Gun (Nozzle 5 mm)
<b>4 Top Coat</b>	FSI	-	1 L 15 L	1 – 2	-	8 – 10 m <sup>2</sup> /l/coat	8 – 10 m <sup>2</sup> 120 – 150 m <sup>2</sup>	Roller or Brush

### Primer Colours

1 Beige	EMP-01-BG	3 Light Green	EMP-03-LGN	7 Light Yellow	EMP-07-LY	11 Medium Brown	EMP-11-MB
2 Off White	EMP-02-OW	4 Light Grey	EMP-04-LG	8 Medium Yellow	EMP-08-MY	12 Dark Brown	EMP-12-DB
		5 Medium Grey	EMP-05-MG	9 Dark Yellow	EMP-09-DY	13 Light Red	EMP-13-LR
		6 Dark Grey	EMP-06-DG	10 Light Brown	EMP-10-LB	14 Dark Red	EMP-14-DR



SUZUKA®

# SPRAY GUN



Features & Benefits:

- Consistent spray pressure
  - Easy maintenance
  - Easy to clean
  - Easy to control
- Exchangeable nozzle
  - No replacement parts required
  - Made in Taiwan



**Spray Gun**  
1 pc

**Air Nozzle**  
3 pcs

**Material Nozzle**  
3 pcs

Nozzle Code	A1	A2	A3	M1	M2	M3
Diameter	1.5mm	2.0mm	2.5mm	5.0mm	6.5mm	8.0mm
Suitable for :	-	NSC	MGM/TC	TC	NSC	MGM



**SUZUKA® PRIMER (EMP)**  
**Features & Benefits**

- Protects against alkaline and efflorescence.
- Excellent adhesion on masonry substrate.
- Water based, non-hazardous, low odor, non-toxic, formaldehyde and heavy metal free.

**SUZUKA® TOP COAT (FSI CLEAR)**  
**Features & Benefits**

- Protects against weather and ultraviolet damage.
- Provides dirt and stain resistance.
- Protects against fungus and algae growth.
- Low sheen and preserves original color.
- Water based, low odor, non-hazardous, non-toxic, formaldehyde and heavy metal free.
- Easy to apply – prevents uneven appearance when dried.

SUZUKA®

# WALL SEALER PRO

“ Make your wall finishes last longer! ”



**Superior primer for concrete, skimmed or masonry surfaces.**

This sealer that has good substrate penetration abilities to increase adhesion of product to prevent chalking or peeling off. It has excellent alkaline resistance properties that can prevent efflorescence. It is an ideal base coat for any SUZUKA® or any wall finish products.

Packing Size:

1L 5L 20L

Coverage	Drying Time (hour)		
6.5 - 8.5 m²/l/coat	Surface Dry : 1	Hard Dry : 5	Recoating : 5
	Substrate Temperature: 23°C - 26°C		

Suitable for:

- Masonry wall
- Brickwork
- Plaster
- Skimmed Coat
- Asbestos free substrate

Features:

- Excellent alkaline resistance to prevent efflorescence.
- Good for new walls and repainting.
- Prevents skim coat from chalking & peeling off.
- Extremely good penetration.
- Excellent adhesion.
- Exterior and interior use.
- Applicable with brush, roller or spray gun.

Airless Spray	Nozzle 1.8 - 2.0 mm	Spray Angle Degree 65° - 80°	Pressure 210 psi/150kg/cm²
---------------	---------------------	------------------------------	----------------------------

# MAGIC GRANITE

With the multi-tone combination of brilliant inorganic mineral flakes, a natural and coarse, yet exquisite granite look is created.

Packing Data:

Primer (EMP)	Texture Coat	Topcoat (FSI)
1L	25kg	1L

Coverage: 5-6 m²



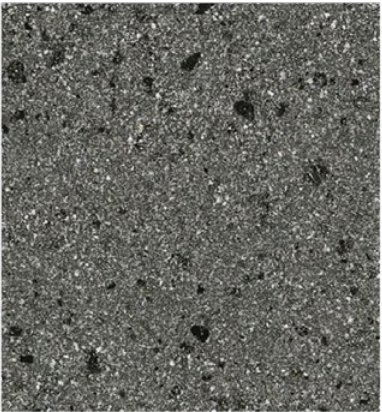
MGM-322

EMP-05-MG



MGM-323

EMP-05-MG



MGM-321

EMP-06-DG







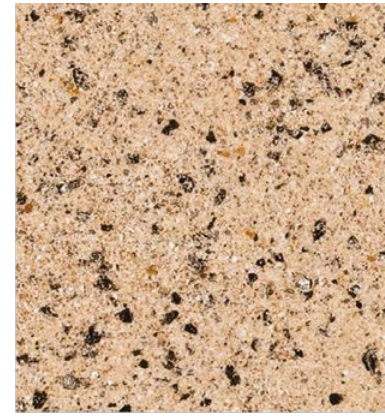
**MGM-324** *EMP-06-DG*



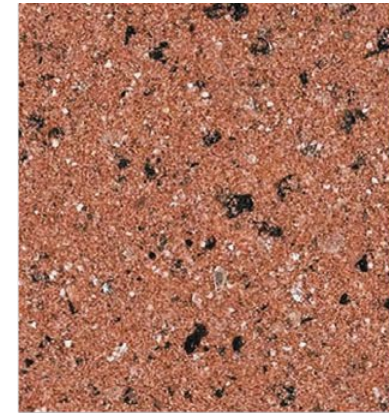
**MGM-310** *EMP-01-BG*



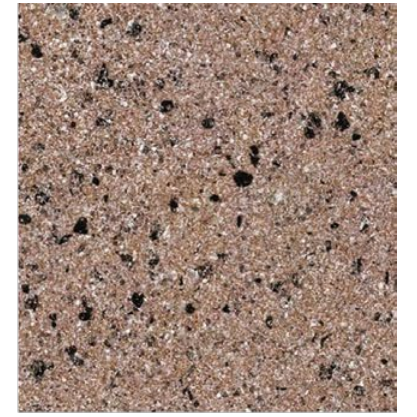
**MGM-303** *EMP-01-BG*



**MGM-305** *EMP-10-LB*



**MGM-318** *EMP-14-DR*



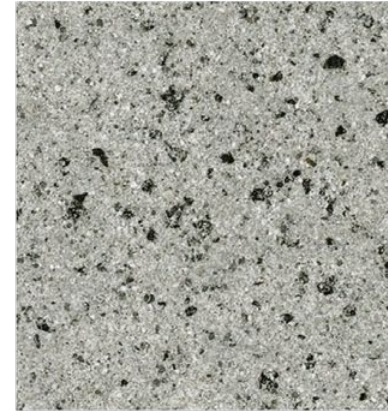
**MGM-307** *EMP-11-MB*



**MGM-301** *EMP-02-OW*



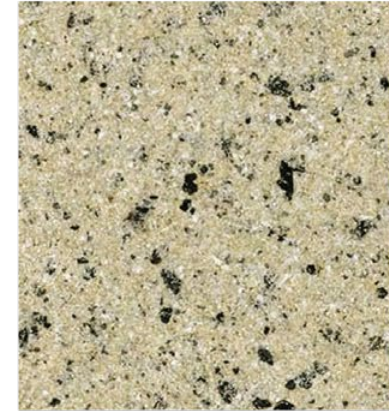
**MGM-311** *EMP-02-OW*



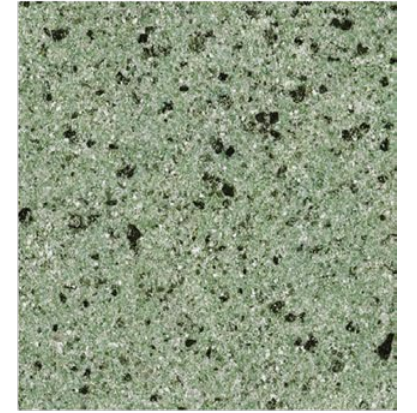
**MGM-309** *EMP-04-LG*



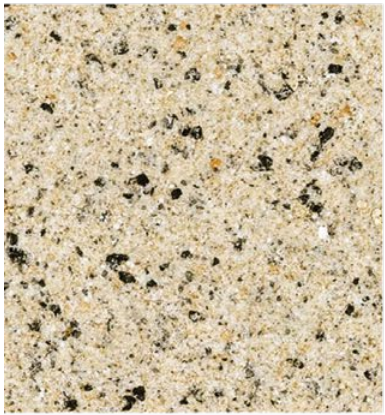
**MGM-302** *EMP-07-LY*



**MGM-308** *EMP-02-OW*



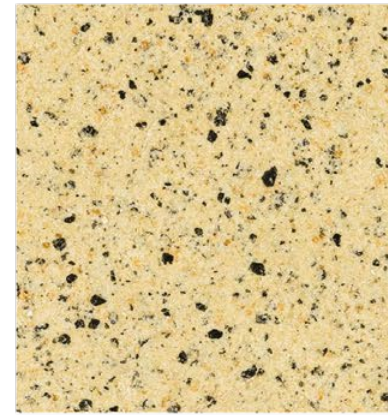
**MGM-320** *EMP-03-LGN*



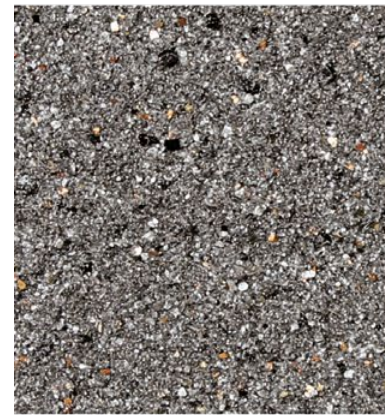
**MGM-312** *EMP-01-BG*



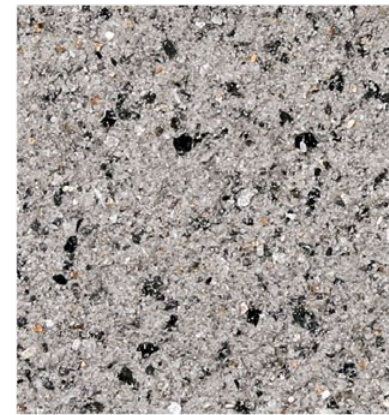
**MGM-304** *EMP-09-DY*



**MGM-313** *EMP-08-MY*



**MGM-325** *EMP-06-DG*



**MGM-326** *EMP-04-LG*



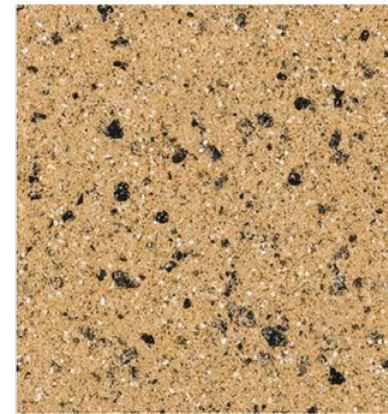
**MGM-327** *EMP-04-LG*



**MGM-315** *EMP-08-MY*



**MGM-319** *EMP-09-DY*



**MGM-317** *EMP-09-DY*



**MGM-328** *EMP-04-LG*



**MGM-329** *EMP-04-LG*



**MGM-330** *EMP-02-OW*





MGM-331 EMP-02-OW



MGM-332 EMP-04-LG



MGM-333 EMP-07-LY



MGM-334 EMP-07-LY



MGM-335 EMP-01-BG



MGM-336 EMP-09-DY



MGM-337 EMP-10-LB



MGM-338 EMP-14-DR



MGM-339 EMP-11-MB



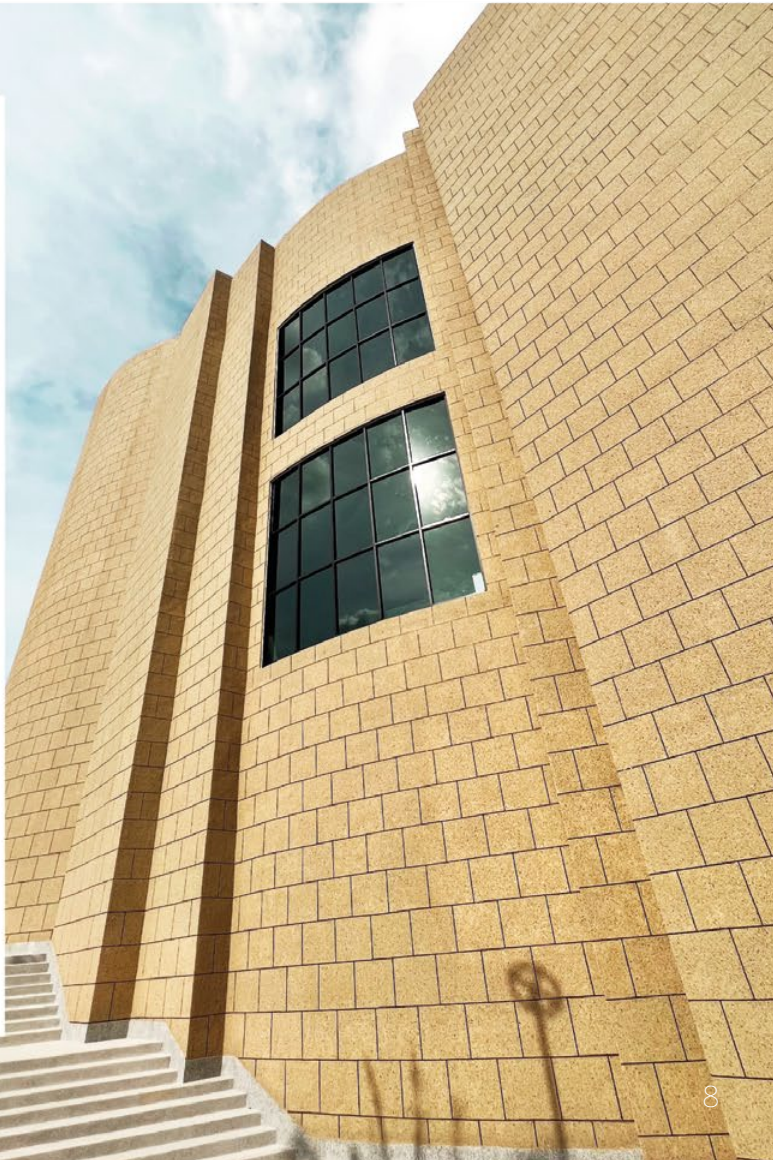
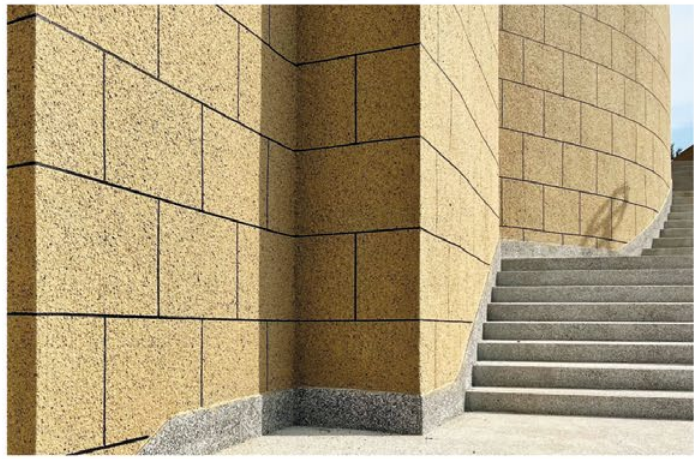
MGM-351 EMP-12-DB



MGM-352 EMP-12-DB



MGM-353 EMP-12-DB







# STONY COAT

Using a combination of color sands, SUZUKA® Stony Coat crafts the authentic effects of natural stones. Its granular surface gives the wall a bold and prominent finish.

Packing Data:

**Primer  
(EMP)**

1<sub>L</sub>

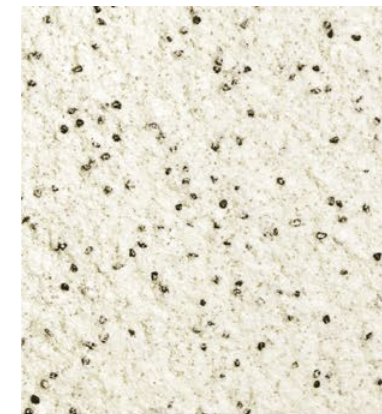
**Texture  
Coat**

25<sub>kg</sub>

**Topcoat  
(FSI)**

1<sub>L</sub>

Coverage: 5-6 m<sup>2</sup>



NSC-601

EMP-02-OW



NSC-606

EMP-04-LG



NSC-620

EMP-05-MG



NSC-607

EMP-02-OW



NSC-622

EMP-04-LG



NSC-623

EMP-05-MG



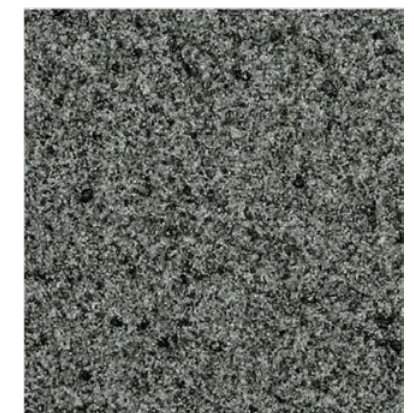
NSC-608

EMP-04-LG



NSC-609

EMP-05-MG



NSC-621

EMP-06-DG



NSC-602

EMP-01-BG



NSC-605

EMP-02-OW



NSC-604

EMP-02-OW





NSC-603 EMP-01-BG



NSC-610 EMP-09-DY



NSC-619 EMP-09-DY



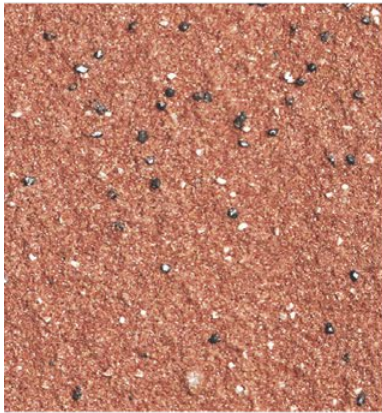
NSC-612 EMP-09-DY



NSC-611 EMP-10-LB



NSC-614 EMP-10-LB



NSC-616 EMP-14-DR



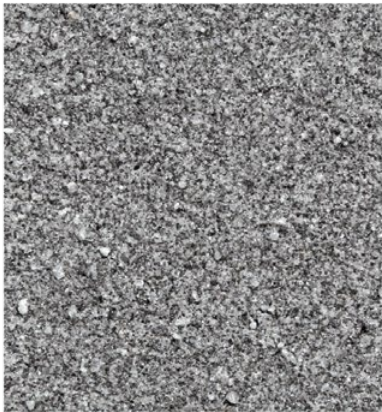
NSC-617 EMP-14-DR



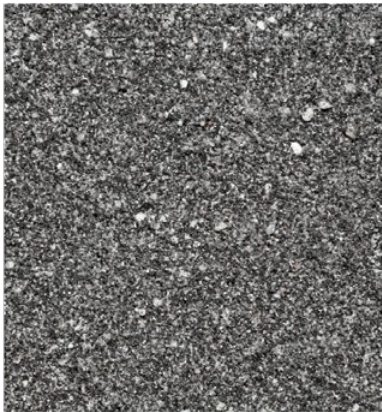
NSC-618 EMP-13-LR



NSC-651 EMP-04-LG



NSC-652 EMP-05-MG



NSC-653 EMP-06-DG



# CERAMIC COAT

The blend of fine grandeur color sands forms a suave and refined texture, giving the walls an elegant and graceful outlook.

Packing Data:

Primer (EMP)	Texture Coat	Topcoat (FSI)
1L	25kg	1L

Coverage: 7-8 m<sup>2</sup>





**TC-704** EMP-02-OW



**TC-706** EMP-02-OW



**TC-705** EMP-02-OW



**TC-725** EMP-04-LG



**TC-726** EMP-04-LG



**TC-722** EMP-05-MG



**TC-723** EMP-05-MG



**TC-724** EMP-06-DG



**TC-727** EMP-06-DG



**TC-717** EMP-02-OW



**TC-718** EMP-07-LY



**TC-721** EMP-12-DB



**TC-702** EMP-07-LY



**TC-703** EMP-01-BG



**TC-709** EMP-08-MY



**TC-701** EMP-02-OW



**TC-707** EMP-01-BG



**TC-719** EMP-04-LG



**TC-708** EMP-01-BG



**TC-711** EMP-08-MY



**TC-710** EMP-09-DY



**TC-716** EMP-10-LB



**TC-713** EMP-13-LR



**TC-715** EMP-13-LR