

**WIN\***  
**RM 1,000!**  
Join our photo contest now!  
\*T&C Apply More info: [suzuka.com.my/promotion](http://suzuka.com.my/promotion)



**WALL FINISH PROFESSIONALS**  
TAIWAN • MALAYSIA • THAILAND

**SUZUKA**



BRICK & STONE VENEER • TEXTURED PAINT • KASTPANEL • ECES • TEXTURE COATING • PEBBLE STONE COATING

SUZUKA®  
**GRANI**  
**MULTICOLOR**  
GRANITE EFFECT COATING

EDITION  
**02**



[suzuka.com.my](http://suzuka.com.my)  
suzuka.group | Hotline : +6012-258 7388

\* Photos of the products shown in this catalogue may vary in color due to lighting condition & printing. We suggest you examine actual product samples before ordering.



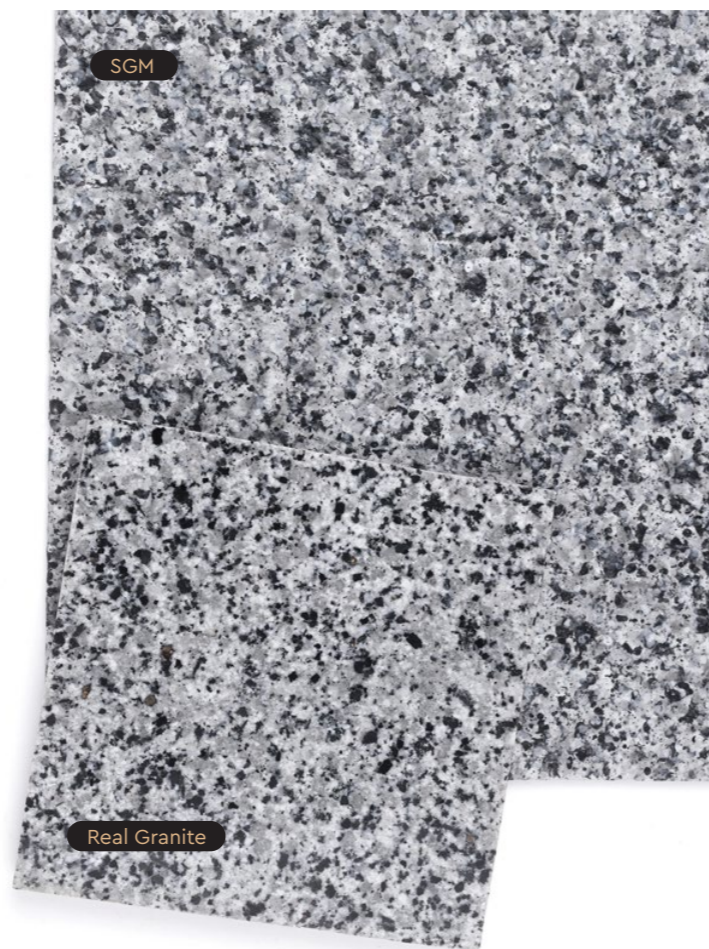
SGM-E2-2308



# SUZUKA® GRANI MULTICOLOR

## GRANITE EFFECT COATING

SGM uses high-performance and environmentally-friendly technology. Its water-based coating packages itself into individual capsules, allowing each to contain its own unique formula and colour. This creates a one-time multi-colour spray system that is not only durable, but also effective in mirroring the authentic granite texture.



## SUZUKA® Grani Multicolor vs. Real Granite

Factors	Suzuka Grani Multicolor (SGM)	Real Granite
Installation Time	Quick	Slow
Installation Ease	Simple	Difficult & requires extensive set-up
Installation Cost	Economical	Expensive
Material Cost	Economical	Expensive
Colour Control	Yes	No
Environmental-Friendliness	Non-invasive & water-based	Environmentally invasive
Safety	No risk	Risk of loosened stones falling
Customization	Yes	No
Maintenance	Economical and simple	Requires replacement & colour matching

### Advantages

- One-time, multi-colour spray system
- Colours and patterns can be customized
- Resistant to stains, fungus, algae, acid and alkali
- Washable and easy to maintain
- High adhesion and anti-peeling/flaking
- Superb elasticity and is crack resistant
- Water-based and eco-friendly
- Excellent durability against weather conditions

# SGM Coating System



## Application Process

Process	Material (Mixing Weight Ratio)	Number of Coats	Time Interval Between Process	Consumption (±15%)	Tools
<b>1 Surface Preparation</b>	Surface needs to be dry and free from dirt, oil, and foreign matter. Surface unevenness, including cracks, will need to be treated with cement filler.				
<b>2 Primer</b>	EM Primer : Water 100 : 0 - 5	1	4 hrs	7 - 9 m <sup>2</sup> /l	Spray Gun, Roller or Brush
<b>3 Texture Coating</b>	SGM Body Coat : Water 100 : 0 - 5	1	24 hrs	3 - 3.5 kg/m <sup>2</sup>	Spray Gun
	SGM Base Color : Water 100 : 0 - 2	2	4 hrs	6 - 7 m <sup>2</sup> /l	Spray Gun, Roller or Brush
	SGM Texture Coat : Water	1 - 2	24 hrs	0.5 - 0.8 kg/m <sup>2</sup>	SGM Spray Gun
<b>4 Top Coat</b>	SGM Topcoat Satin: Water 100 : 0 - 2	1	-	8 - 9 m <sup>2</sup> /l	Spray Gun, Roller or Brush



## SUZUKA® WALL SEALER PRO

“ Make your wall finishes last longer! ”



### Superior primer for concrete, skimmed or masonry surfaces.

This sealer that has good substrate penetration abilities to increase adhesion of product to prevent chalking or peeling off. It has excellent alkaline resistance properties that can prevent efflorescence. It is an ideal base coat for any SUZUKA® or any wall finish products.

Packing Size:

1L 5L 20L

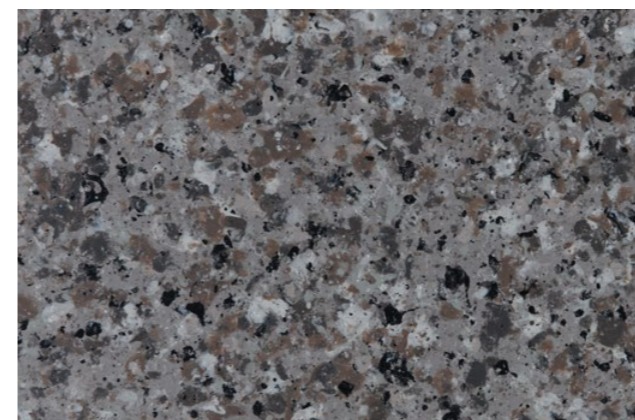
Coverage	Drying Time (hour)		Airless Spray
6.5 - 8.5 m <sup>2</sup> /l/coat	Surface Dry : 1	Substrate Temperature: 23°C - 26°C	Nozzle : 1.8 - 2.0 mm Spray Angle Degree : 65° - 80° Pressure : 210 psi/150kg/cm <sup>2</sup>
	Hard Dry : 5		
	Recoating : 5		

Suitable for:

- Masonry wall
- Brickwork
- Plaster
- Skimmed Coat
- Asbestos free substrate

Features:

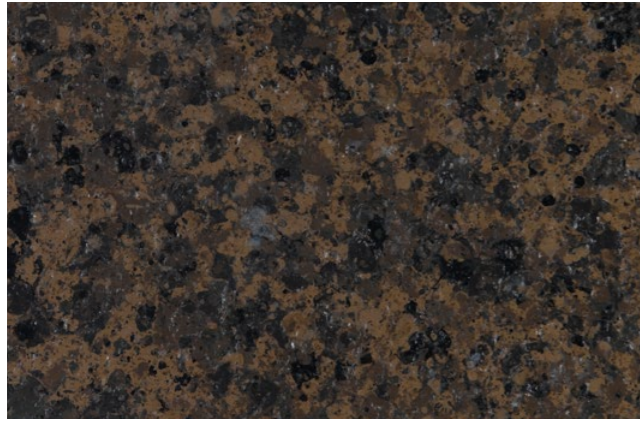
- Excellent alkaline resistance to prevent efflorescence.
- Good for new walls and repainting.
- Extremely good penetration.
- Excellent adhesion.
- Exterior and interior use.



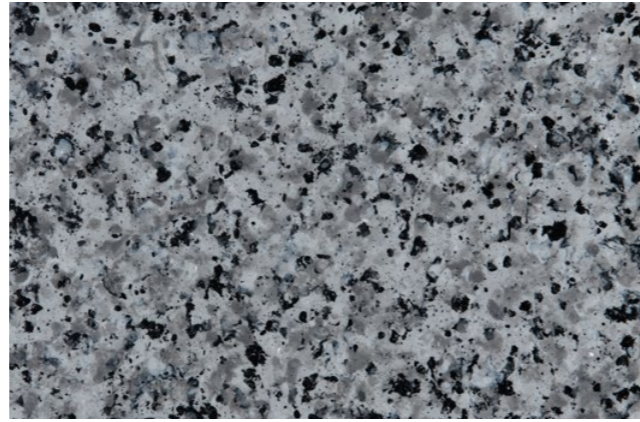
SGM-G-101



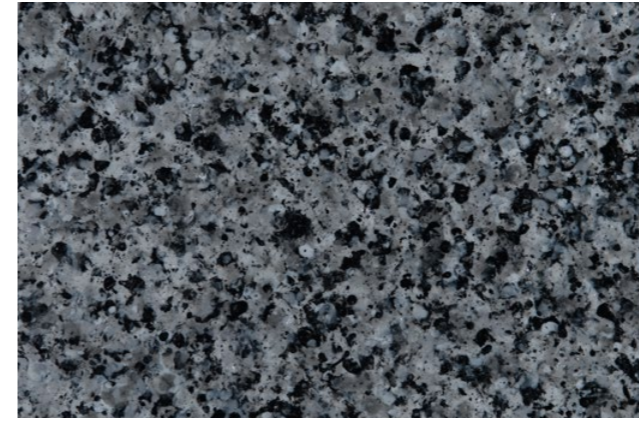
SGM-G-102



SGM-G-103



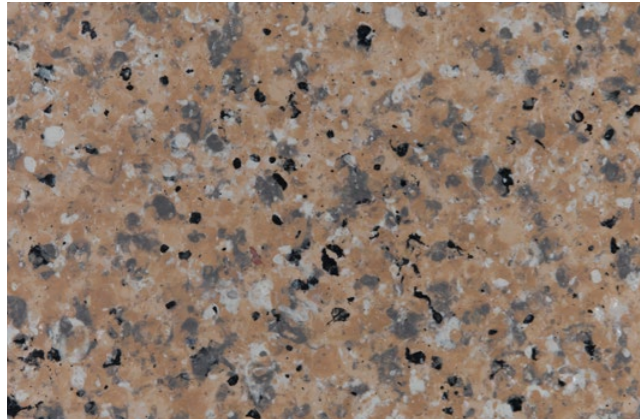
SGM-G-104



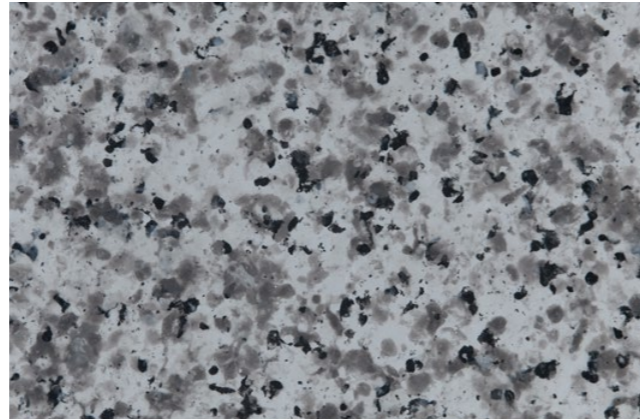
SGM-G-111



SGM-G-112



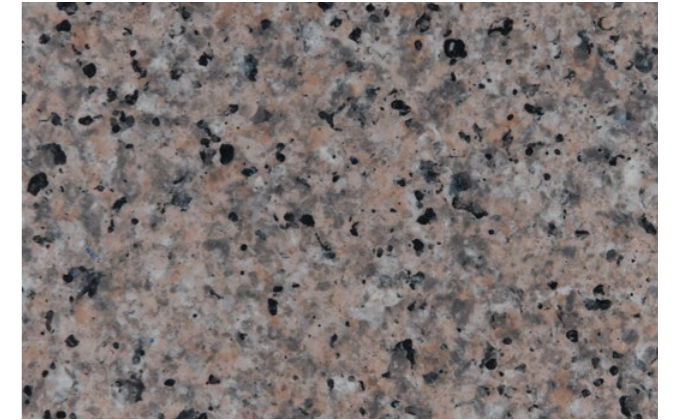
SGM-G-105



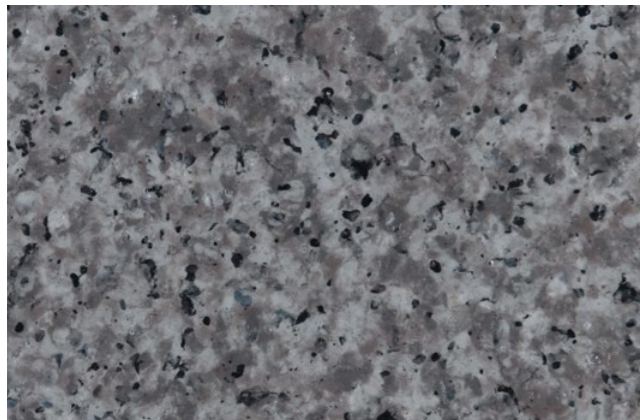
SGM-G-106



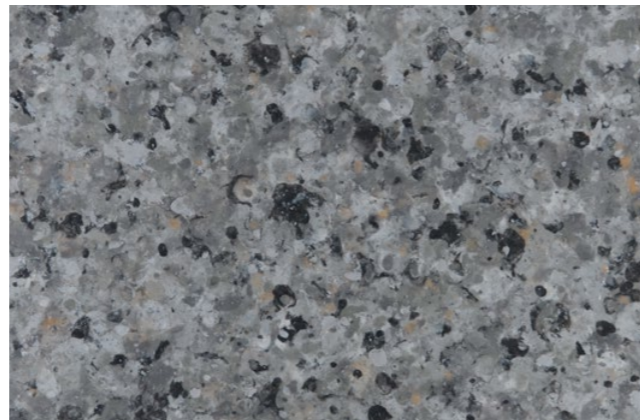
SGM-G-113



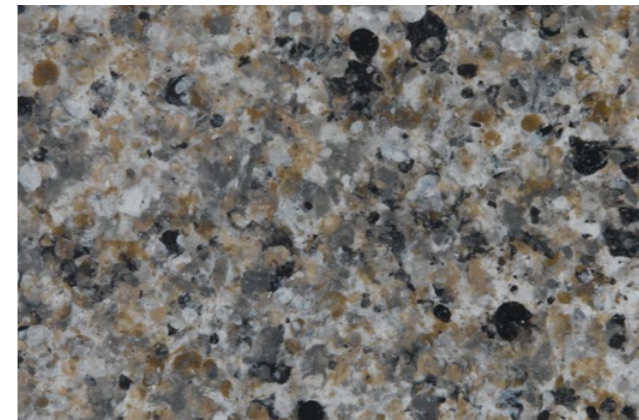
SGM-G-114



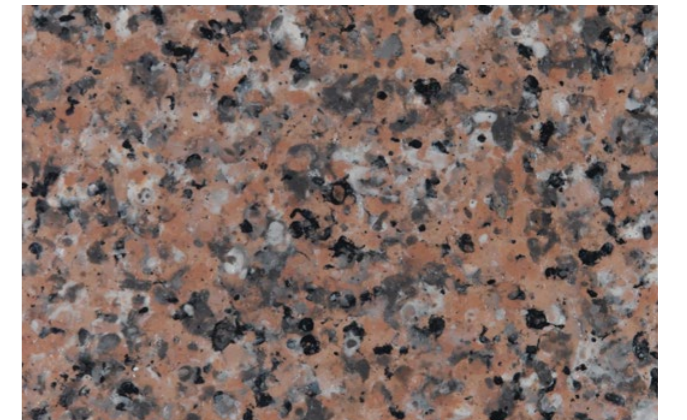
SGM-G-107



SGM-G-108



SGM-G-115



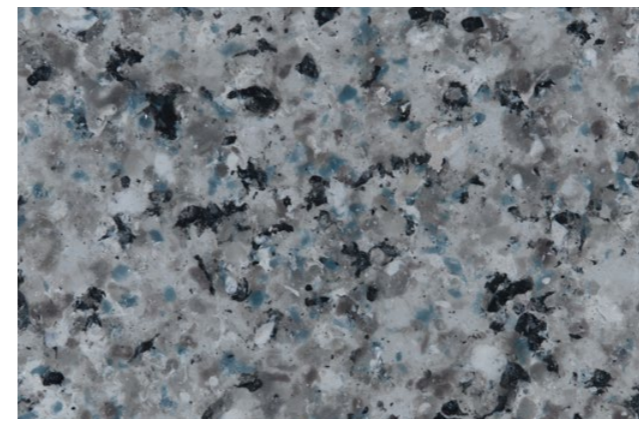
SGM-G-116



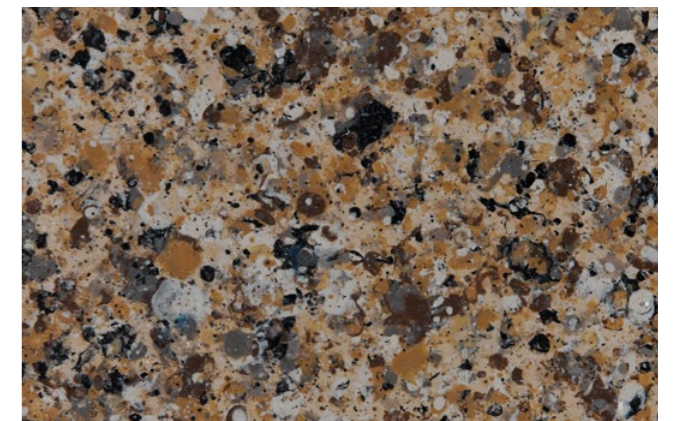
SGM-G-109



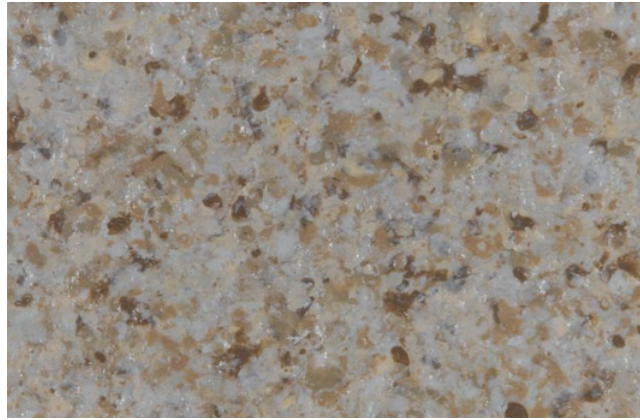
SGM-G-110



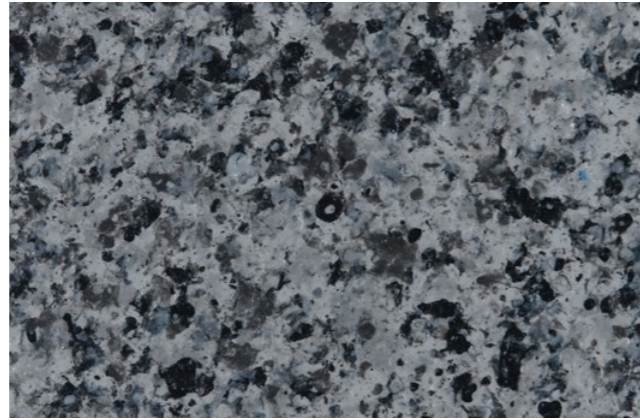
SGM-G-117



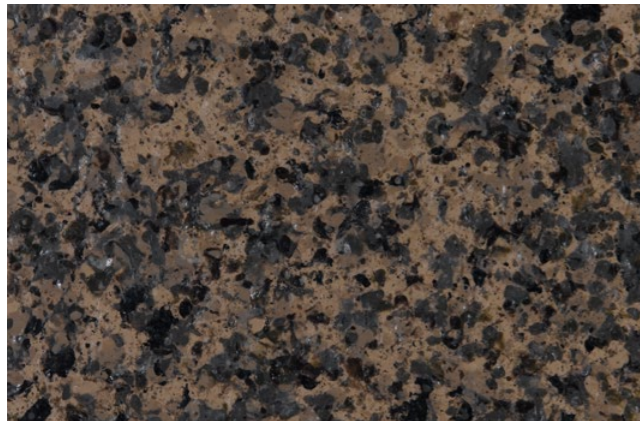
SGM-G-118



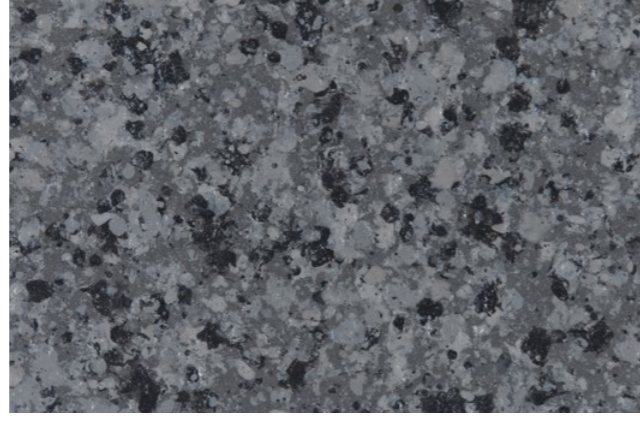
SGM-G-119



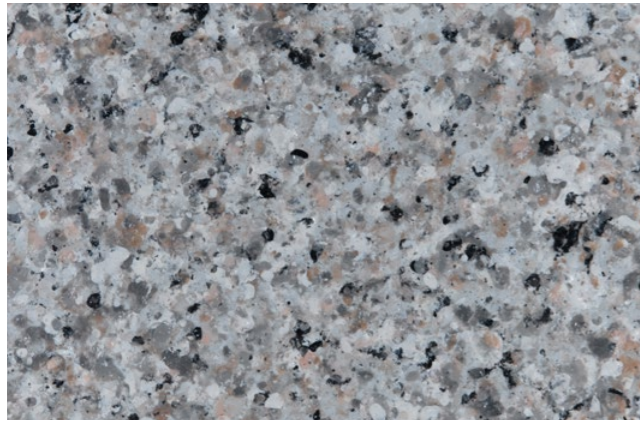
SGM-G-120



SGM-G-121



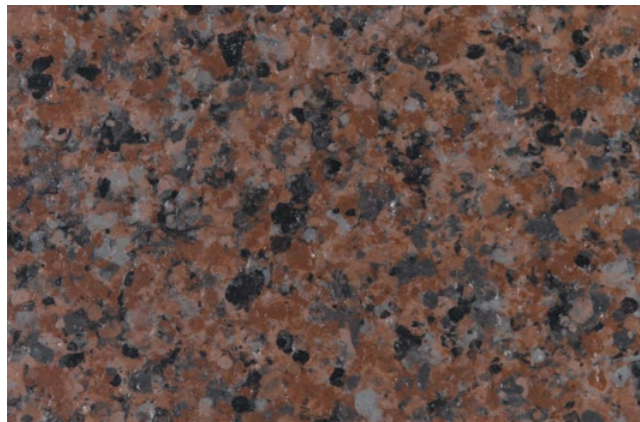
SGM-G-122



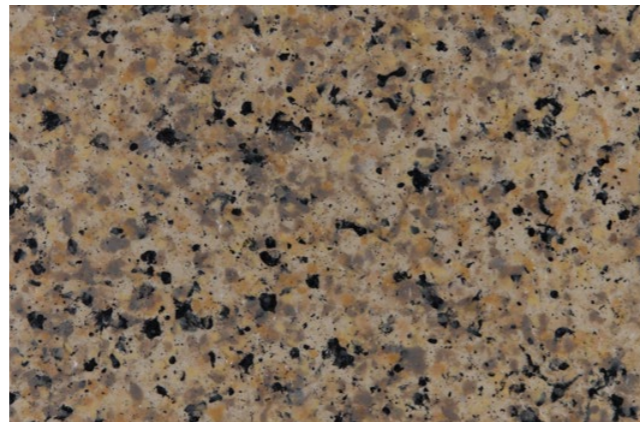
SGM-G-123



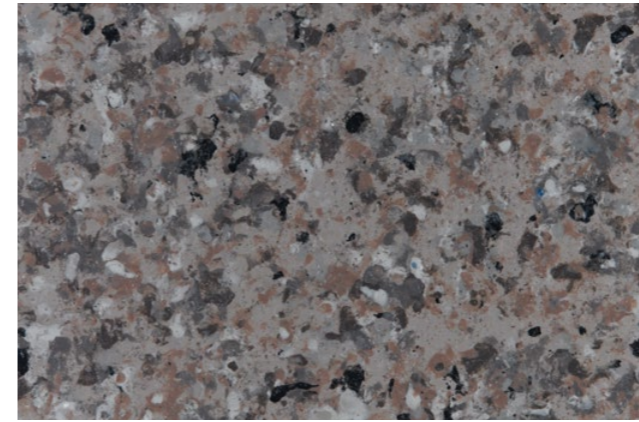
SGM-G-124



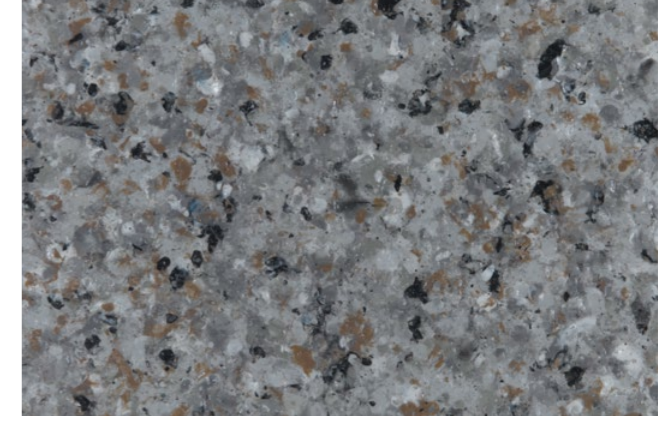
SGM-G-125



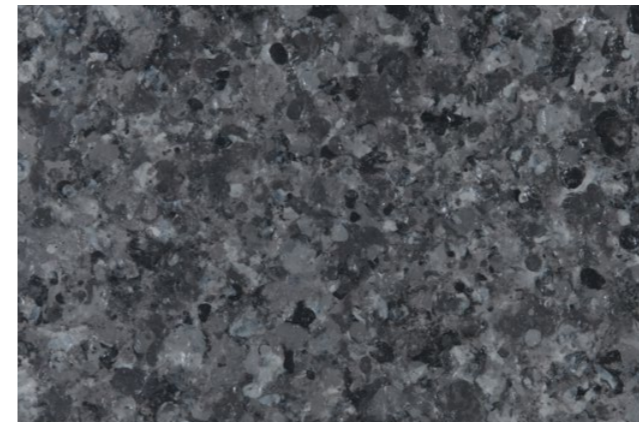
SGM-G-126



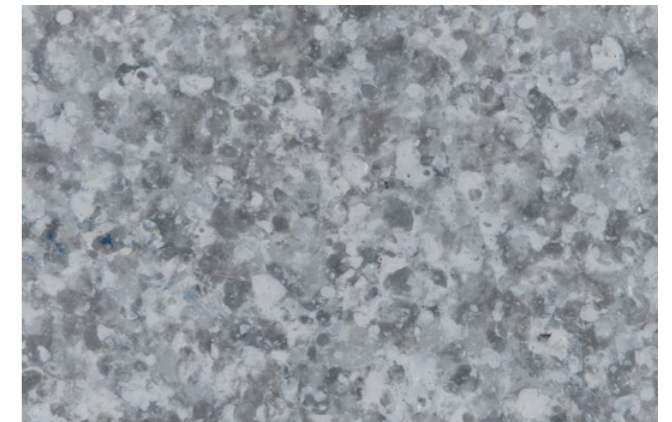
SGM-G-127



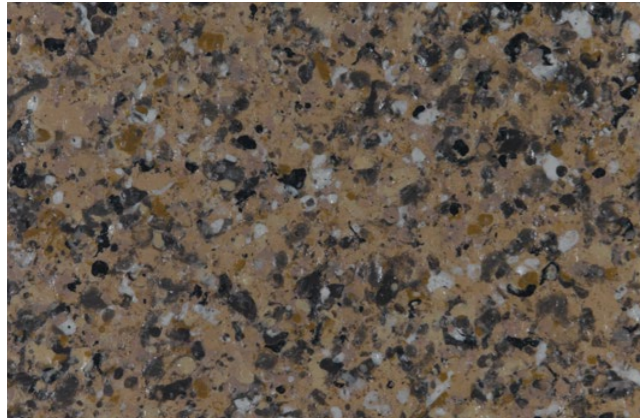
SGM-G-128



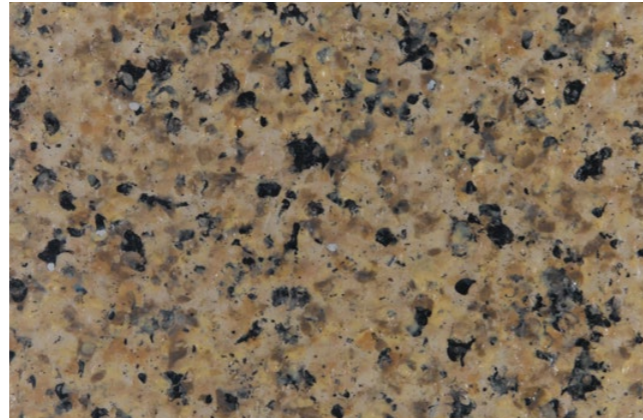
SGM-G-129



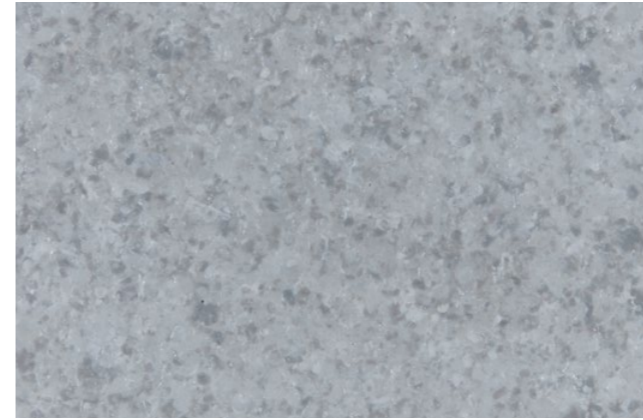
SGM-G-130



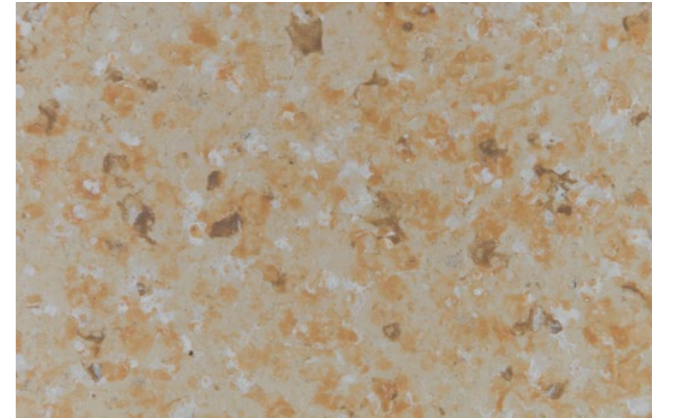
SGM-G-131



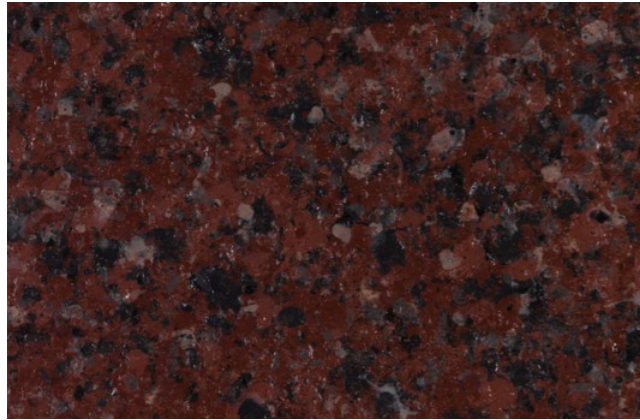
SGM-G-132



SGM-G-139



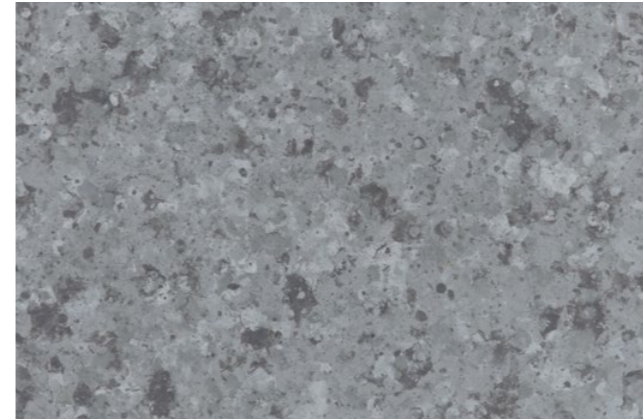
SGM-G-140



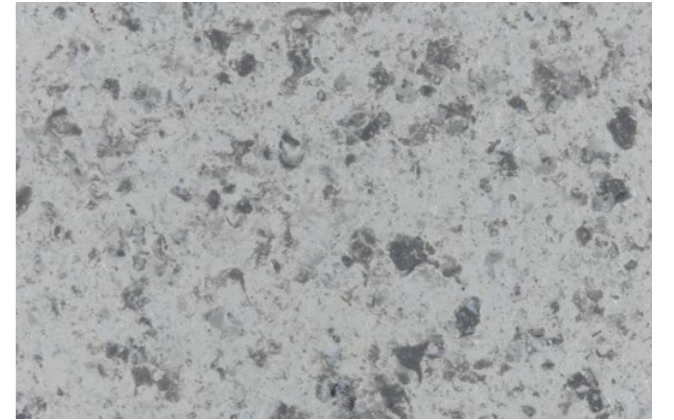
SGM-G-133



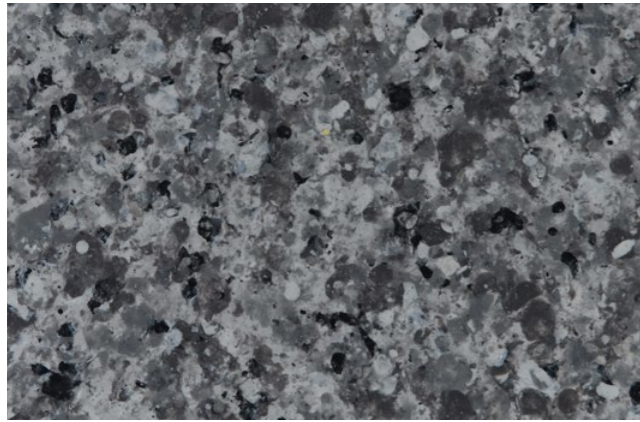
SGM-G-134



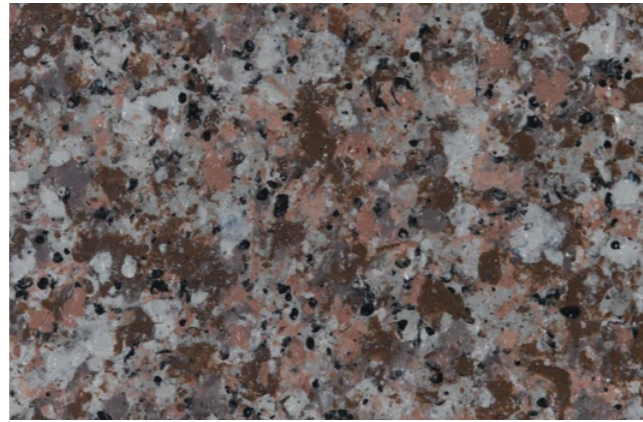
SGM-G-141



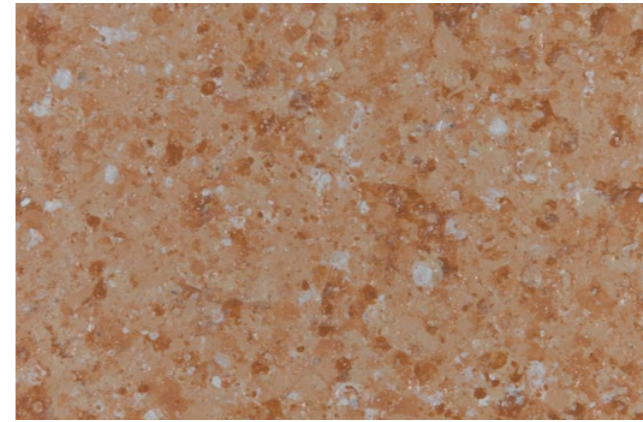
SGM-G-142



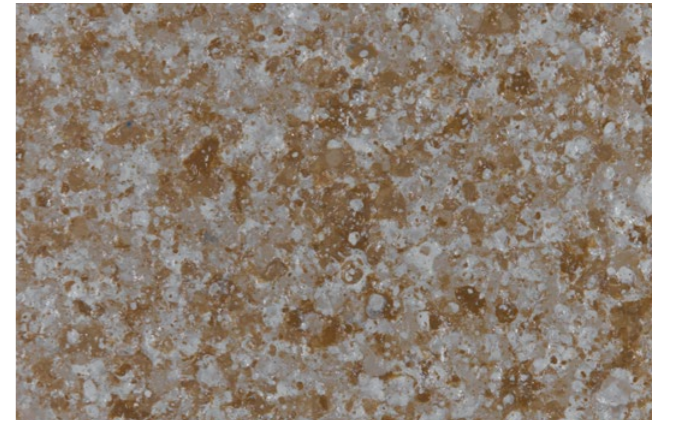
SGM-G-135



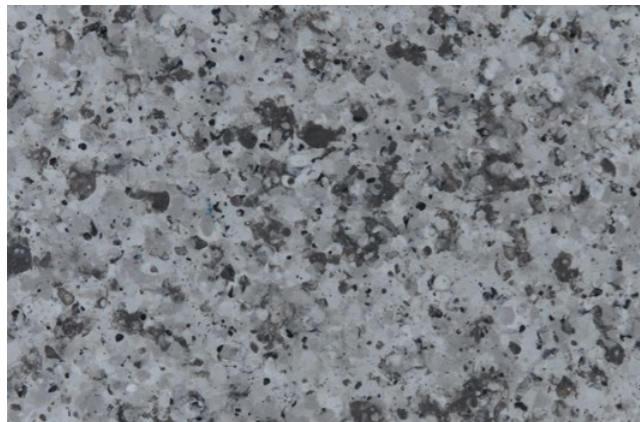
SGM-G-136



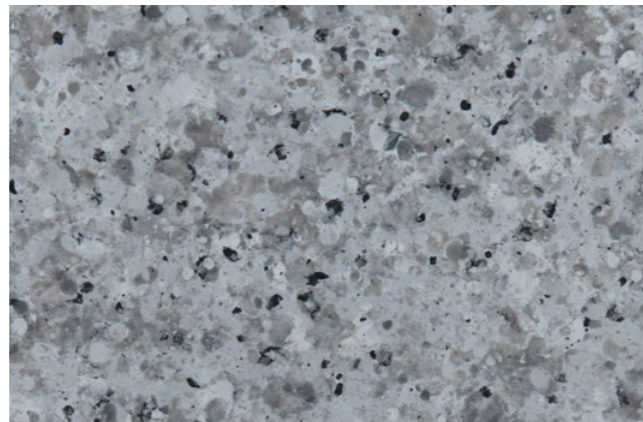
SGM-G-143



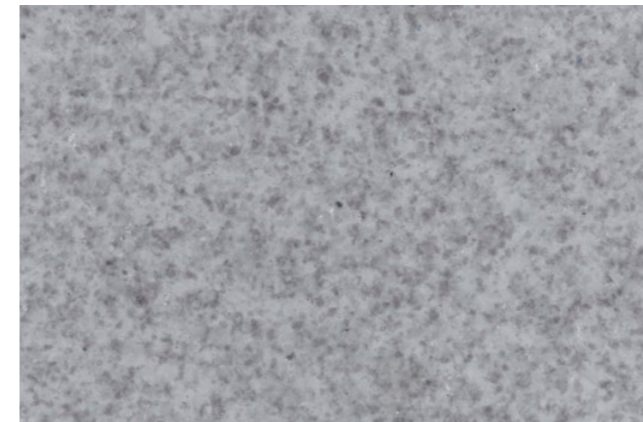
SGM-G-144



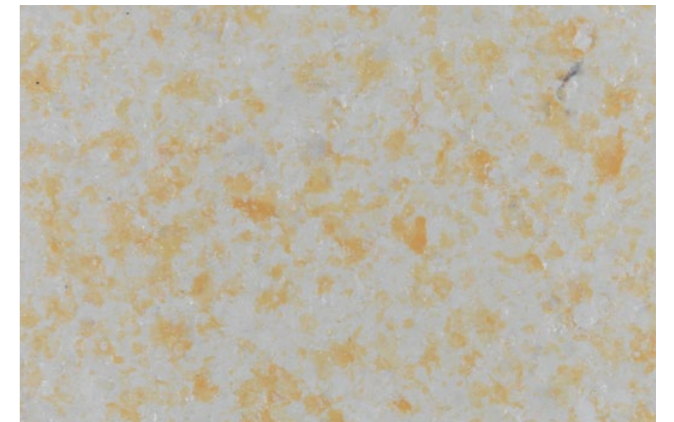
SGM-G-137



SGM-G-138



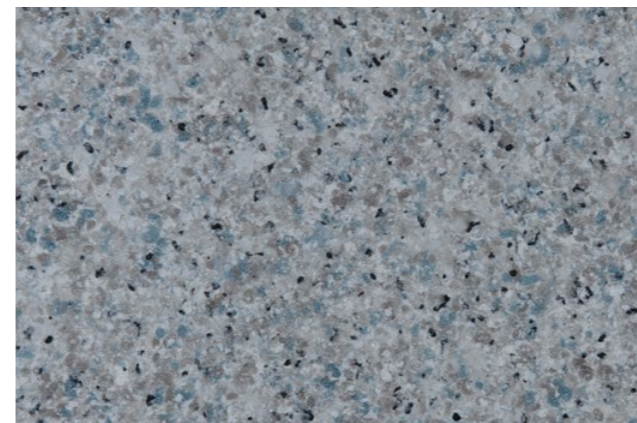
SGM-G-145



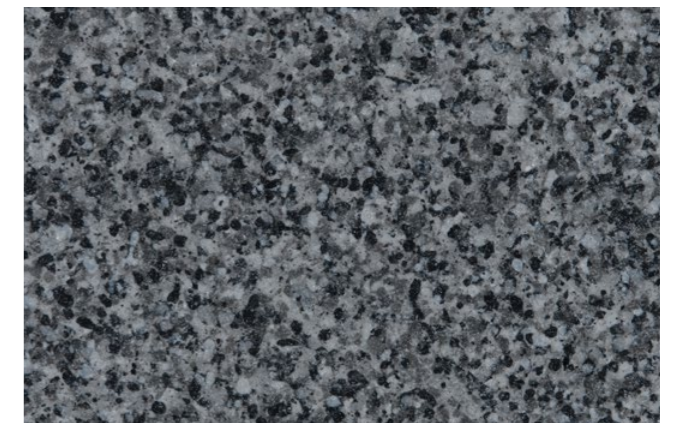
SGM-G-146



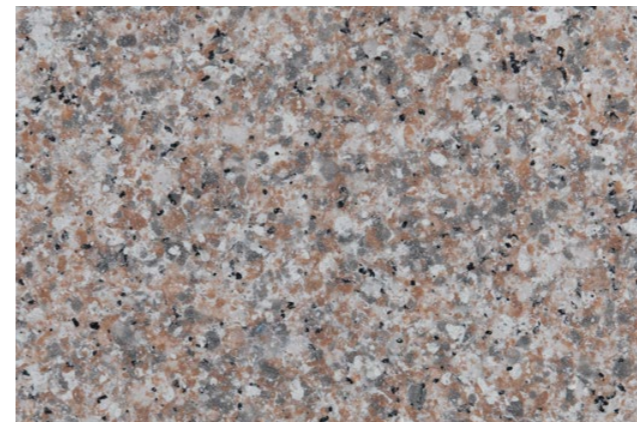
# S Type



SGM-S-303



SGM-S-304



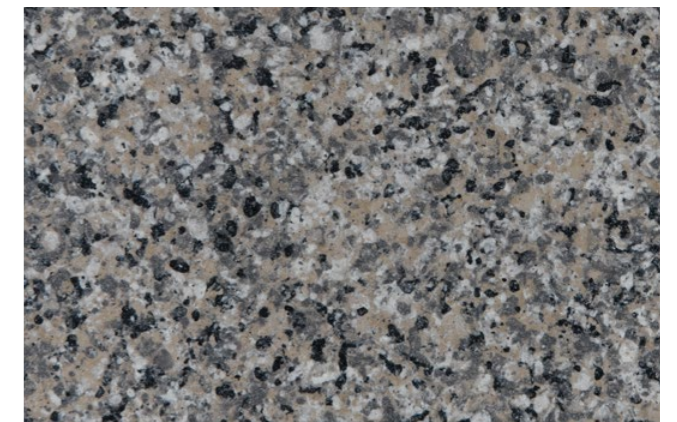
SGM-S-305



SGM-S-306



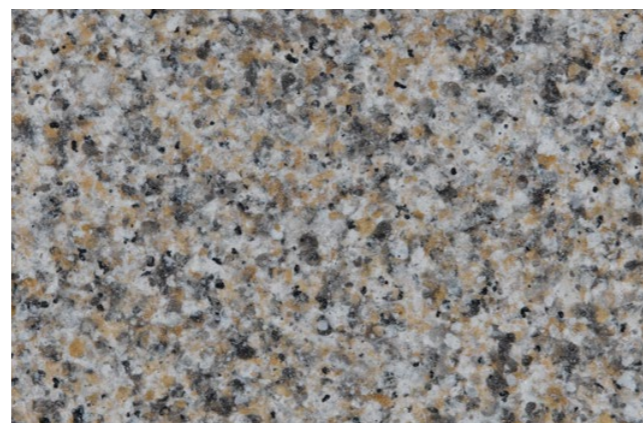
SGM-S-307



SGM-S-308



SGM-S-301



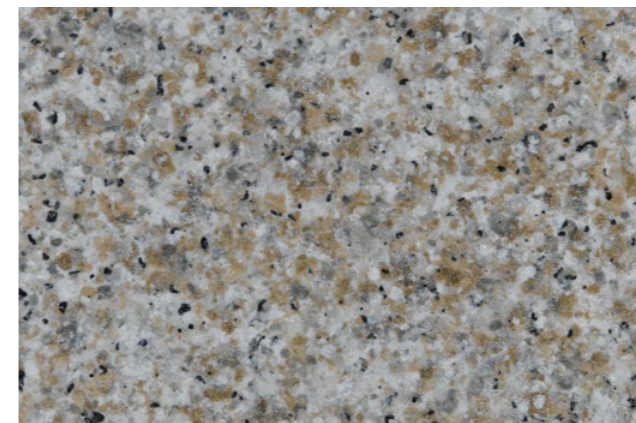
SGM-S-302



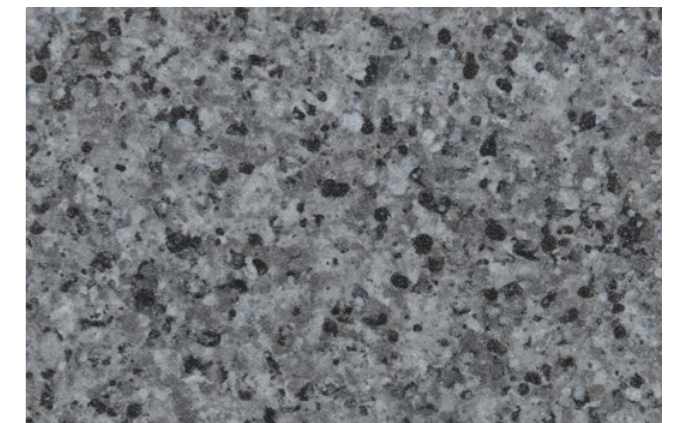
SGM-S-309



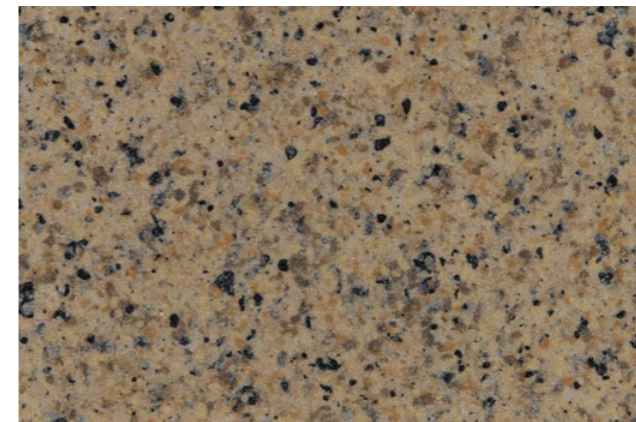
SGM-S-310



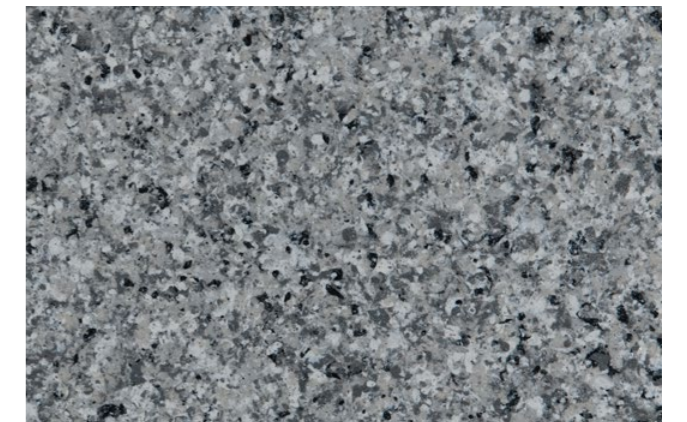
SGM-S-311



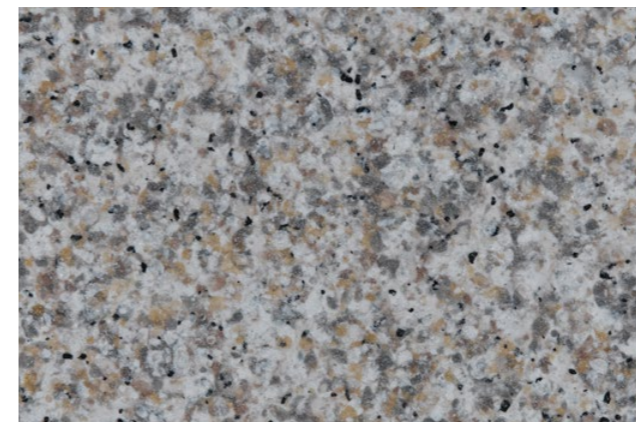
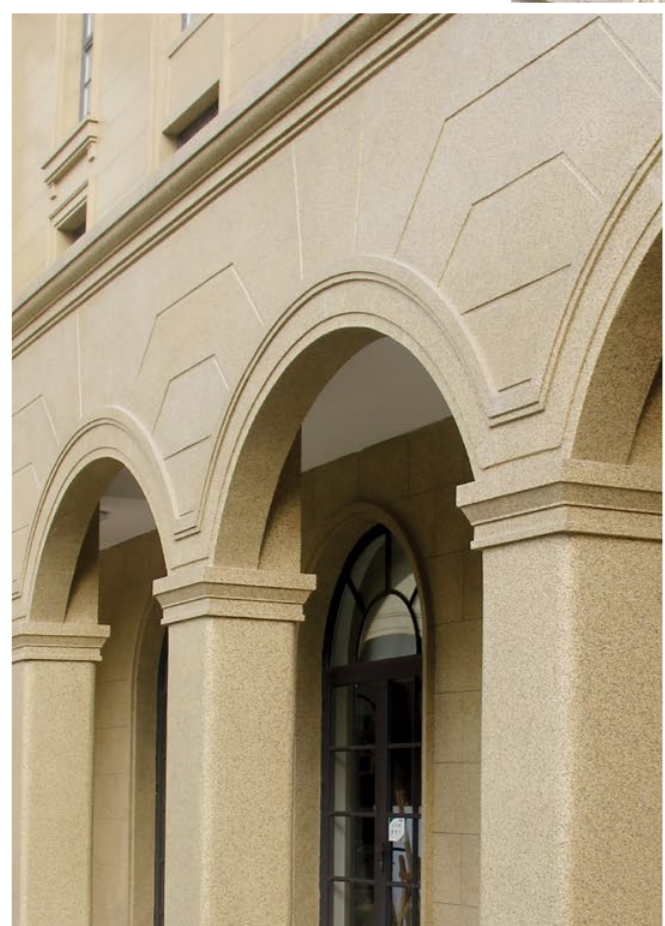
SGM-S-312



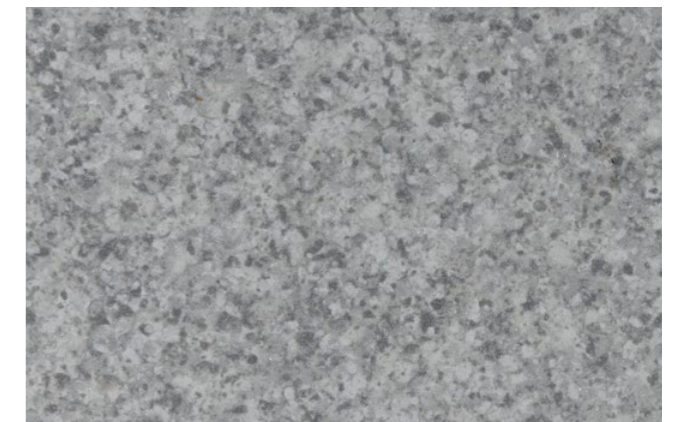
SGM-S-313



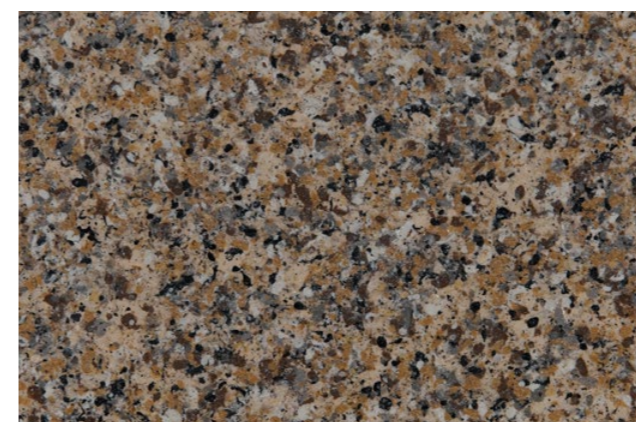
SGM-S-314



SGM-S-315



SGM-S-316



SGM-S-317



SGM-S-318